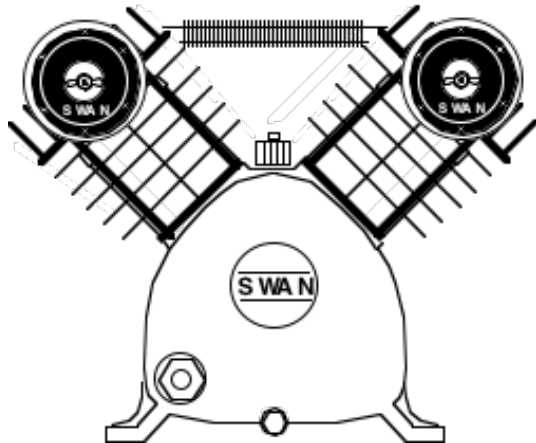
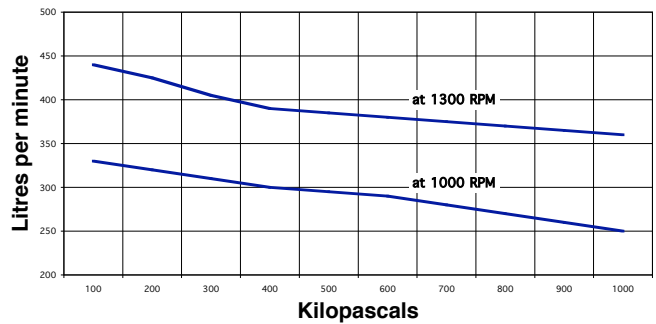


### SWAN model SV-202 Single stage 2 cyl. air cooled

Rev.  
No. CS0308-SV202



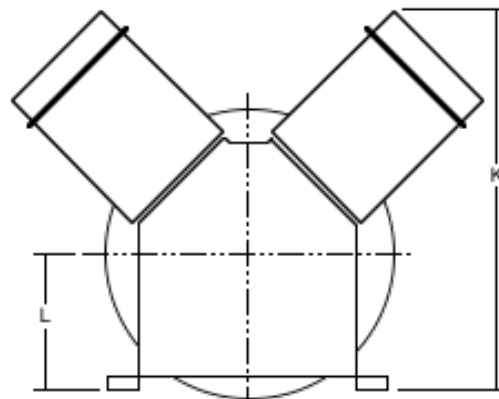
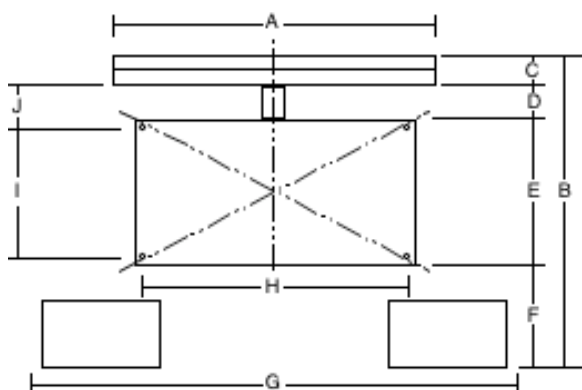
### SV-202 PERFORMANCE



Main Construction Material	Cast Iron			
Bore	mm	65		
Stroke	mm	51		
Minimum Speed	rpm	650		
<b>Normal Speed</b>	<b>rpm</b>	<b>1300</b>		
Maximum Speed	rpm	1500		
Minimum Working Pressure	kPa	275		
Maximum Working Pressure	kPa	964		
Minimum Ambient Temperature	Celsius	0°		
Maximum Ambient Temperature	Celsius	45°		
Air Connection Comp. Fitting	mm	12.7		
Air Cleaners	Dry Fibre Type			
Bore Lubrication	Splash Feed			
Oil Capacity of Crankcase	Litres	0.497		
Type of Drive	V-belt	2A		
Approximate Net Weight	kgs	26		
Rotation Looking at Flywheel	Anti-clockwise			

<i>The following are at normal speed with an ambient temperature of 31.1°C &amp; inlet air of 101 kPa g pressure.</i>				
Piston Displacement	L/min	440		
Free Air Delivery @ 689 kPa	L/min	375		
Shaft Input:				
@ 415 kPa	kW	1.35		
@ 551 kPa	kW	1.49		
@ 689 kPa	kW	1.61		
@ 964 kPa	kW	1.89		
Temperature of Air Discharge:				
@ 415 kPa	Celsius	93°		
@ 551 kPa	Celsius	99°		
@ 689 kPa	Celsius	106°		
@ 964 kPa	Celsius	131°		
Maximum Lubricant Consumed				
in 100 hours Operation	millilitre	19.70		
Noise Level at 1 metre	dB(A)	79		



A	270 mm
B	300 mm
C	38 mm
D	52 mm
E	140 mm
F	40 mm
G	400 mm
H	205 mm
I	120 mm
J	70 mm
K	310 mm
L	110 mm

Forbes (Aust) Pty Ltd reserves the right to change the specifications of any of its products without prior notice